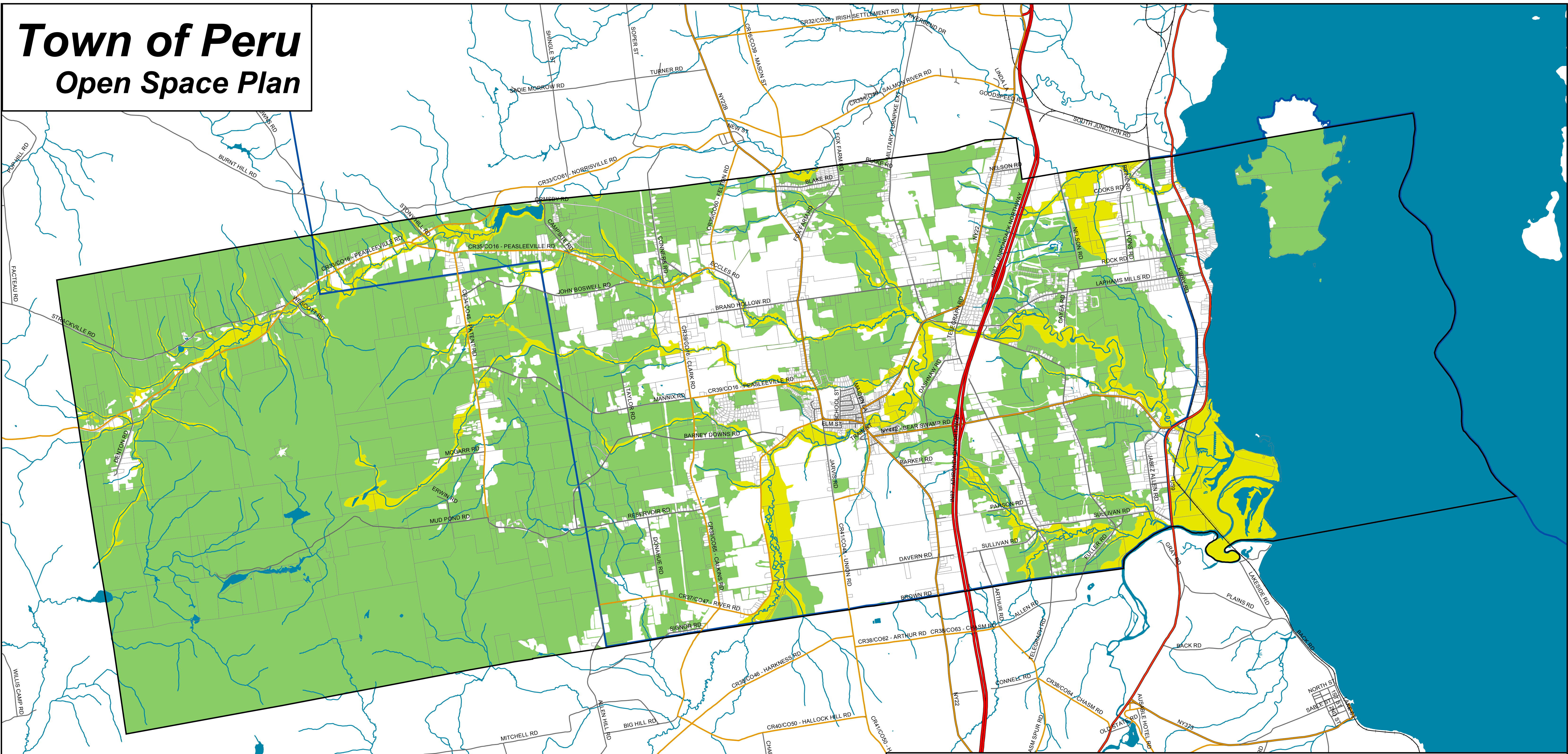


# Town of Peru Open Space Plan



The stream corridor was developed for the following major named rivers and streams in Peru:  
 Ausable River, Little Ausable River, Salmon River, Arnold Brook, Dry Mill Brook, Silver Stream, and Spaulding Brook.

The corridor area was developed by combining the flood plains, adjacent wetlands, and slopes over 15% along each of these streams. The resulting overlay was then edited by comparing it to aerial photographs. Active farmland, residential, commercial, and other built land uses, were removed from the corridor area. Some adjacent woodland areas were added to the corridor area where there was a distinct change from the wooded area to another kind of land cover. Smaller tributaries of the major streams were included in the corridor if the flood plain extended upstream.

**Stream and River Corridors**

- Town Boundary
- ADK Park Blue Line
- Property Boundaries
- Water
- Streams
- Stream Corridors
- Woodland

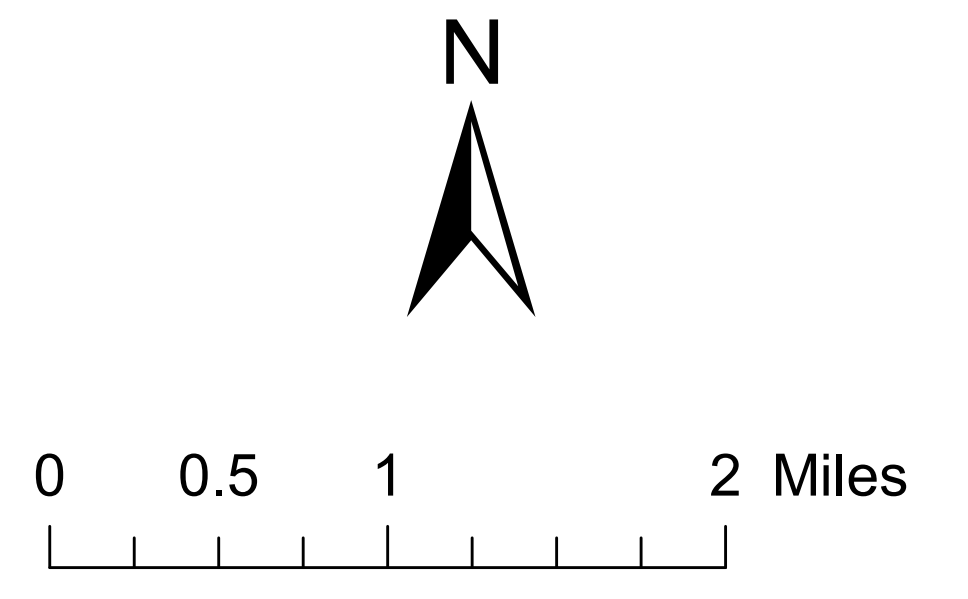
**Roads**

- Interstate and Ramp
- Federal Route
- NYS Route
- County Road
- Local Road
- Railroads

**Community Planning &  
Environmental Associates**

152 Stolzenburg Road, Berne, New York 12023

Nan Stolzenburg AICP - [www.planningbetterplaces.com](http://www.planningbetterplaces.com)  
 Don Meltz Planning and GIS - [www.donmeltz.com](http://www.donmeltz.com)



Map Date 8-19-2008