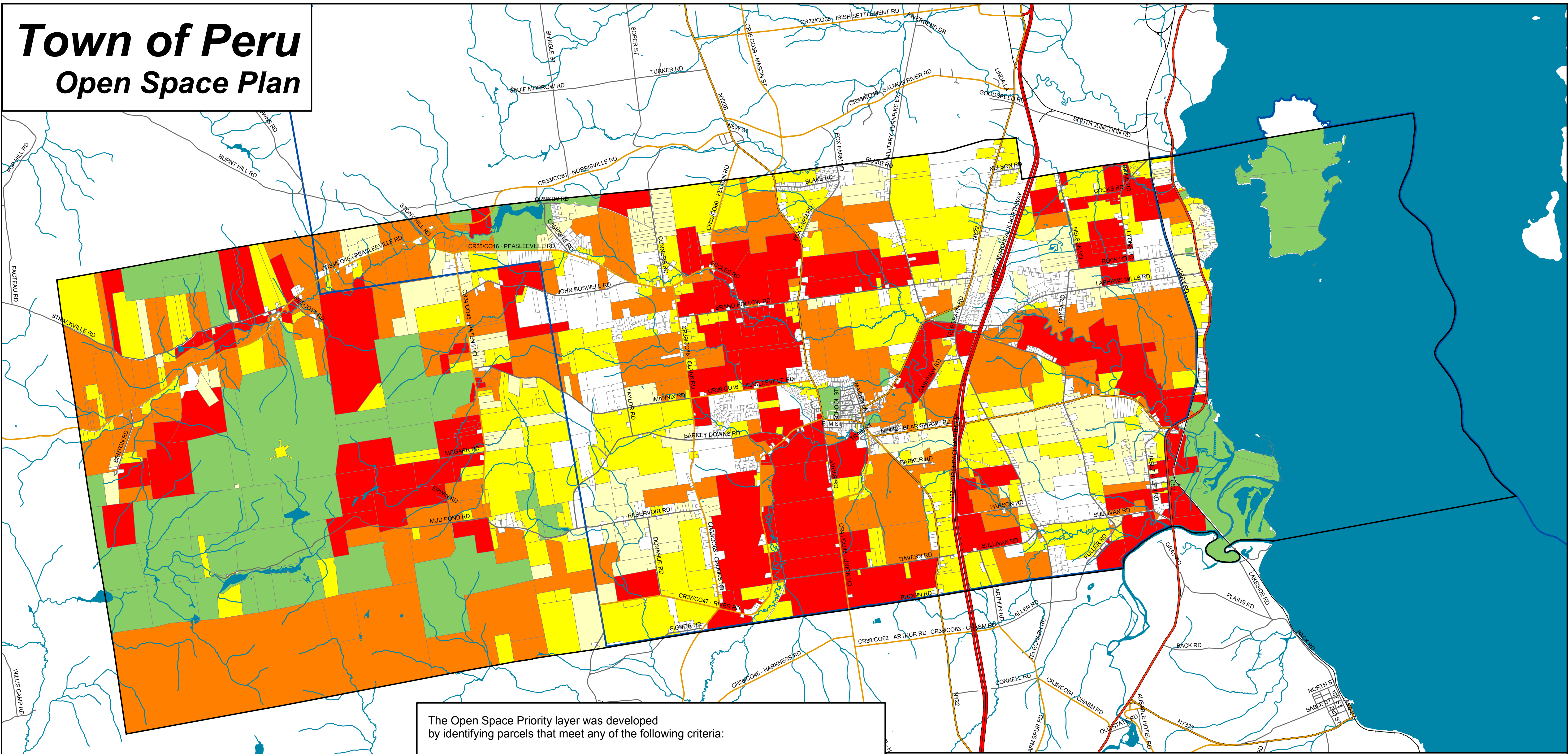


Town of Peru Open Space Plan



The Open Space Priority layer was developed by identifying parcels that meet any of the following criteria:

- 1- Within 1/4 mile of a view point
- 2- Adjacent to a trail (snowmobile or hiking)
- 3- Within 500 feet of the Lakes to Locks passage
- 4- Within 1/4 mile of State Land, State Park, or the Black Brook Conservation Easement
- 5- Within 100 feet of a stream or water body
- 6- Within the Town Reservoir's Watershed
- 7- Within 100 feet of a wetland
- 8- Within a Natural Heritage Sensitive Location area
- 9- Within 1/4 mile of an APA designated stream
- 10- Contains an APA critical environmental area
- 11- Within an Agriculture Land Use Cluster
- 12- Part of a Stream Corridor

Parcels meeting any of the first 10 criteria were given 1 point for each criteria met. Parcels meeting either of the last 2 criteria were given 3 points for each criteria met. Parcels with a high level of existing development, or otherwise unable to provide open space were given a score of 0

The parcels with the highest total number of points should be viewed as having the highest priority for open space protection

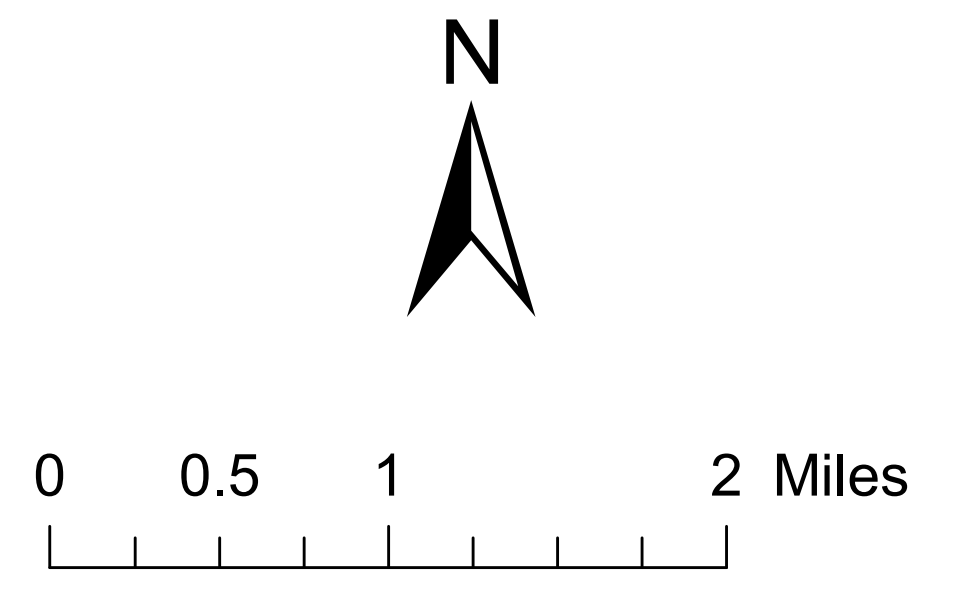
Prioritized Open Space Parcels

Town Boundary	Water
ADK Park Blue Line	Streams
Property Boundaries	Open Space Priorities
Roads	(Higher # = Higher Priority)
Interstate and Ramp	0
Federal Route	1 - 2
NYS Route	3 - 4
County Road	5 - 6
Local Road	7 - 11
Railroads	Currently Preserved Parcels

**Community Planning &
Environmental Associates**

152 Stolzenburg Road, Berne, New York 12023

Nan Stolzenburg AICP - www.planningbetterplaces.com
Don Meltz Planning and GIS - www.donmeltz.com



Map Date 10-16-2008